



Alchimie T by Giulia Archimede
Catellani & Smith

The antithesis between light and dark, between the Sun and Moon, is everlasting, like part of the same flow of existence. Many allegorical meanings have been given to the necessary relationship between two elements that each exist as a consequence of the other. The new lamp Alchimie T, designed by Giulia Archimede for Catellani & Smith, investigates this dimension, whose components are diametrically opposed but always, and forever, connected. Alchimie T is an exquisite sculpture composed of two discs in brass and alabaster - the latter used for the first time in a Catellani & Smith creation - that, with a light touch of the hand, slide in parallel to one another on a track-base made of medea limestone. The interaction between light and shade reaches its peak the moment when the two discs overlap and almost mimic an eclipse. The movement, by changing both form and light intensity of the lamp to create a new ambience in the room, provides a unique user experience. Alchimie T forges a partnership between object and user, who is made to feel at ease and finds a connection with the space around them.

www.catellanismith.com



Pomme
CTO Lighting

Inspired by the gentle curves of petals coming into bloom, the curve of Pomme's glass is achieved by experimenting with the material whilst still in its liquid form. The giant dimple at the centre gives the light a sculptural appeal.

The table light comes in two finishes; tinted and matte opal, the metal base comes in two finishes, satin brass or bronze.

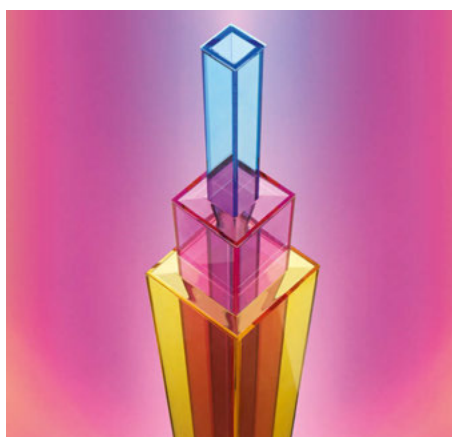
ctolighting.co.uk



WireLine
Formafantasma for Flos

Using the power cable as one of the main design features for this fixture, it is flattened to resemble a belt made of rubber and hangs from the ceiling. The cable holds a ribbed glass extrusion containing an LED and on a materials level the lamp plays on the contrast between the industrial feeling of the rubber and sophistication of glass.

www.flos.com



UpTown
Foscarini

UpTown is a combination of three plate glass volumes screen printed in tones of yellow, red and blue, overlaid to give rise to new shadings. Transparency is the guiding driving factor behind every step of the design, like the 45° cut that makes the meeting point of the glass panes imperceptible.

www.foscarini.com



Petra
Icone Luce

Characterised by square and regular shapes, Petra can be admired for its colours, an absolute peculiarity of the collection, which thanks to the careful selection of materials and tones, emerge in a unique way. Petra is available in Etruscan copper and brushed brass, Etruscan gold and silver, slate, white and ecru.

www.iconeluce.com